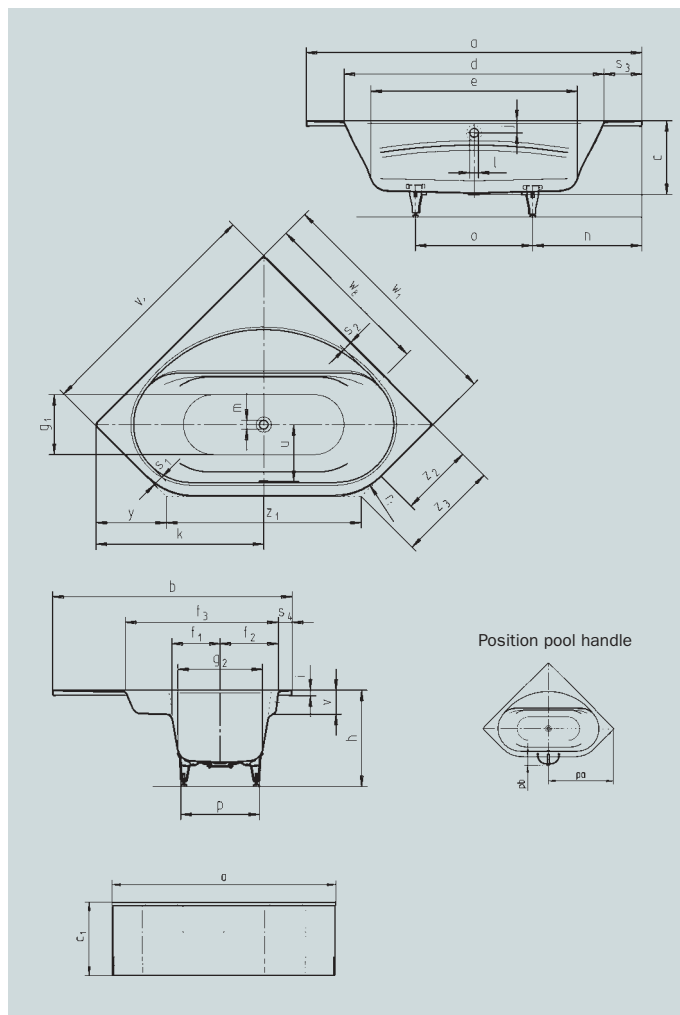


VAIO DUO 3 VAIO DUO 3 WITH MOULDED PANEL

- attractive corner bathtub with distinct arm rest which can also be used as a seat
- bathing with a friend: two identical back rests and centrally positioned outlet
- also available with panel



Model no.	962 / 962-7	
External length	a	1961 mm
External width	b	1401 mm
Overall height with panel	c ₁	560 mm
Depth	c	430 mm
Internal length (top)	d	1522 mm
Internal length (bottom)	e	1206 mm
Internal width (top) bathing area; incl. armrest	f ₁ ; f ₂ ; f ₃	282; 340; 855 mm
Internal width (bottom)	g ₁ ; g ₂	353; 496 mm
Height with feet	h	550-590 mm
Height of rim	i	32 mm
Distance top edge to centre of overflow hole	j	70 mm
Distance tub edge to centre of drain hole	k	980 mm
Diameter of overflow hole	l	52 mm
Diameter of drain hole	m	52 mm
Distance foot end of tub edge to centre of base	n	680,5 mm
Distance between the feet	o	600 mm
Max. width of feet	p	455 mm
Distance tub edge to drilled hole in the middle	pa	980 mm
Max. overhang	pb	136 mm
Radius	r ₁	400 mm
Width of rim (foot end; lengthwise)	s ₁ ; s ₂ ; s ₃ ; s ₄	62; 55; 219; 80 mm
Distance between centre holes	u	332 mm
Armrest depth	v	140 mm
Side length	v ₁	1400 mm
Side width	w ₁	1400 mm
Narrowest point (for wall inlet fittings)	w ₈	1000 mm
Fase	y	410,5 mm
Side length	z ₁ ; z ₂ ; z ₃	1140; 428; 594 mm
Water volume** in litres		125
Anti-slip		-
Full anti-slip		-

Subject to technical alterations and tolerances.
** 70 litres displacement on average.