

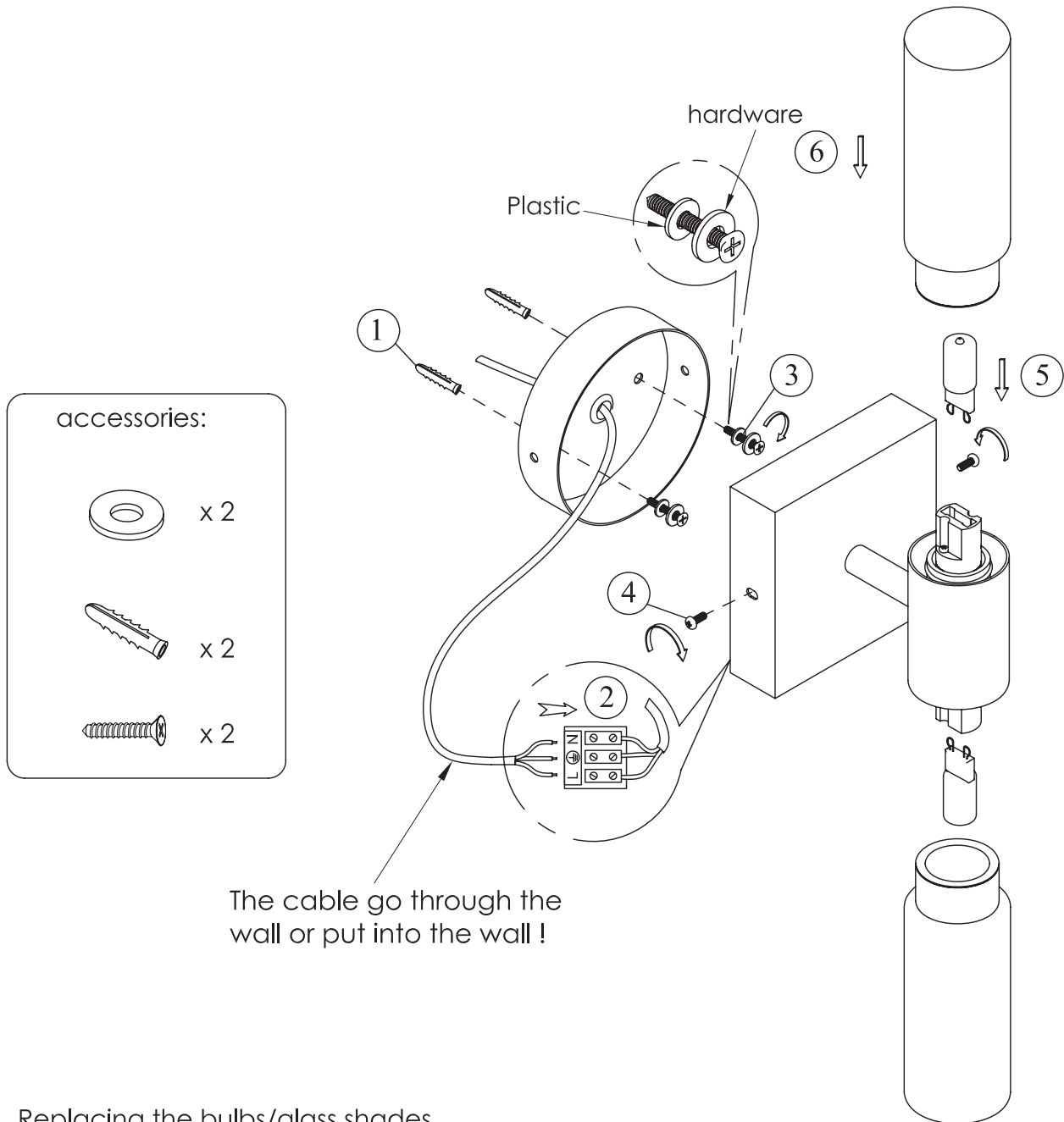


# Installation Instruction

MODEL NO.: AU445

Notice: Please read all of the operating instructions before using the product for the first time

If you do not have the expertise required for the installation, do not install it by yourself but ask a qualified technician.



The cable go through the wall or put into the wall !

## Replacing the bulbs/glass shades



Wait until the faulty bulb and the light have cooled down sufficiently.

- Remove the faulty bulb from the socket. Do not bend the bulb/glass shades. it could break or burst.
- Insert a new light bulb with G9 socket (max. 40W) into the light socket.
- Connect the light to the mains supply again and check that the new bulb is functioning.